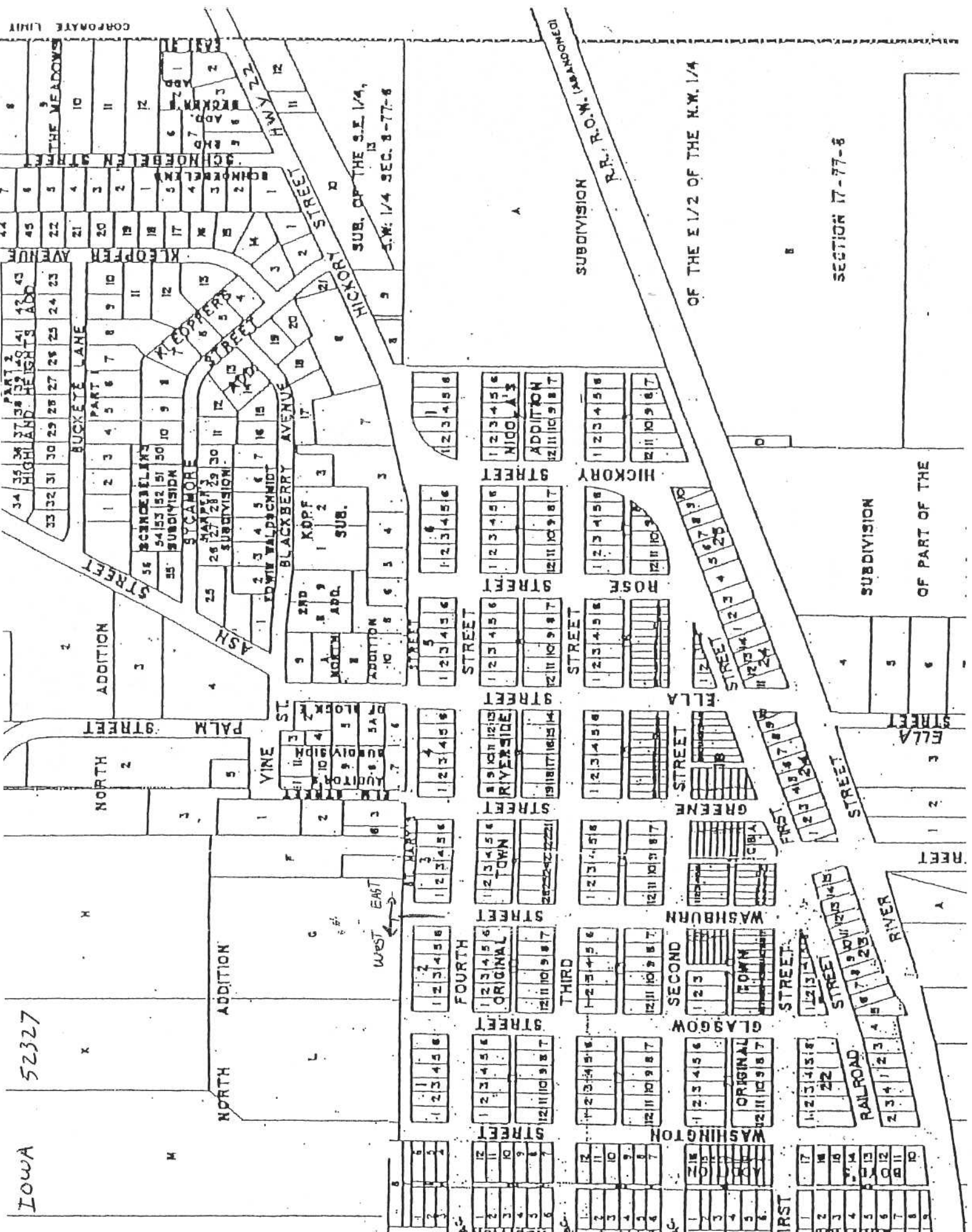


Iowa

52327



SECTION 17-77-6

OF THE E 1/2 OF THE N.W. 1/4

SUBDIVISION

SUBDIVISION

OF PART OF THE

STREET

ELLA STREET

STREET

FRST. STREET

GREENE STREET

WASHBURN STREET

GLASSGOW STREET

WASHBURN STREET

GREENE STREET

FLLA STREET

ROSE STREET

HICKORY STREET

STREET

STREET

STREET

STREET

SUB. OF THE S.E. 1/4, S.W. 1/4 SEC. 8-77-6

NORTH ADDITION

NORTH STREET

ADDITION

STREET

BUCKETEYE LAKE

KLEOPFER AVENUE

STREET

THE MEADOWS

CORPORATE LIMIT